

SCHEDULE 17.1 PROPOSED & CANDIDATE SPECIAL AREAS OF CONSERVATION
MAP 17.01

ID	Name	Designation
1	Wicklow Mountains National Park	pSAC
2	Bray Head	cSAC
3	Knocksink Wood	cSAC
4	The Murrough Wetlands	cSAC
5	Magherabeg Dunes	cSAC
6	Buckrone-y-Brittis Dunes and Fen	cSAC
7	Carrigower Bog	pcSAC
8	Staney River Valley, <i>Tomnafinnoge Wood, Dereen River</i>	cSAC
9	Holdenstown Bog	pcSAC
10	Deputy's Pass NR (in Glenealy Woods)	cSAC
11	Glen of the Downs	cSAC
12	Vale of Clara	cSAC
13	Wicklow Reef	cSAC
14	Ballyman Glen	SAC

SCHEDULE 17.2 PROPOSED NATURAL HERITAGE AREAS
MAP 17.02

ID	Name
1	Ballyman Glen
2	Bray Head
3	Carrigower Bog
4	Devil's Glen
5	Glen of the Downs
6	Kilmacanogue Marsh
7	Knocksink wood
8	Brittis & Buckrone-y
9	The Murrough Wetlands
10	The Poulaphuca reservoir
11	Vale of Clara- Rathdrum Wood
12	Wicklow Head
13	Arklow Rock – Askintinny
14	Arklow sand dunes
15	Avoca River Valley
16	Ballinacor Wood
17	Ballinagee
18	Ballycore Rath
19	Dargle River Valley
20	Glencree Valley
21	Glenealy Woods
22	Holdenstown Bog
23	Newtown Marshes
24	Lowtown Fen
25	Magherabeg Dunes
26	Powerscourt Waterfall
27	Powerscourt Woodland
28	Great Sugar Loaf
29	Vartry Reservoir
30	Dunlavin Marshes
31	Tomnafinnoge Wood
32	Hollywood Glen

33	Avondale
34	Wicklow Mountains National Park

SCHEDULE 17.3 SPECIAL PROTECTION AREAS (SPA)

MAP 17.03

ID	Name	Designation
1	Wicklow Mountains National Park	SPA
2	Poulaphuca Reservoir	SPA
3	The Murrough Wetlands (including Kilcoole Marshes & Broadlough)	SPA
4	Wicklow Head	SPA

SCHEDULE 17.4 NATURE RESERVES

MAP 17.04

ID	Location	Habitat
1	Glen of the Downs	Woodland
2	Deputy's Pass, Glenealy	Woodland
3	Vale of Clara	Woodland
4	Glendalough	Woodland
5	Glenealo Valley	Blanket bog, Heath
6	Knocksink Wood	Woodland

SCHEDULE 17.5 EXISTING TREE PRESERVATION ORDERS

MAP 17.05

ID	Description	Location
1	Birch Trees	Kilqueeny, Avoca
2	Trees at Avoca Handweavers	Glencormick South, Kilmacanogue
3	Trees in the vicinity of Glencree	Oldboleys
4	Oak trees	Quarry Road, Killincarrig, Greystones
5	Woodland	Coolattin Estate
6	Woodland	Coolattin Estate
7	Woodland	Coolattin Estate
8	Parkland trees	Coolattin Estate
9	Parkland trees	Coolattin Estate
10	Parkland trees	Coolattin Estate
11	Parkland trees	Coolattin Estate
12	Parkland trees	Coolattin Estate
13	Parkland trees	Coolattin Estate
14	Parkland trees	Coolattin Estate
15	Parkland trees	Coolattin Estate
16	Parkland trees	Coolattin Estate
17	Parkland trees	Coolattin Estate
18	Parkland trees	Coolattin Estate
19	Parkland trees	Coolattin Estate
20	Parkland trees	Coolattin Estate
21	Parkland trees	Coolattin Estate
22	Parkland trees	Coolattin Estate
23	Parkland trees	Coolattin Estate
24	Woodland	Coolattin Estate
25	Woodland	Coolattin Estate
26	Woodland	Coolattin Estate
27	Woodland	Coolattin Estate
28	Woodland	Coolattin Estate
29	Woodland	Coolattin Estate
30	Woodland	Coolattin Estate
31	Woodland	Coolattin Estate
32	Woodland	Coolattin Estate
33	Woodland	Coolattin Estate
34	Woodland	Coolattin Estate
35	Woodland	Coolattin Estate
36	Woodland	Coolattin Estate
37	Woodland	Coolattin Estate
38	Woodland	Coolattin Estate
39	Woodland	Coolattin Estate
40	Oak, Pine Ornamental & boundary trees	Kendalstown Rise, Kindlestown Upper, Delgany
41	Woodlands & trees in the Dargle Glen	Tinnahinch Newtown, Cookstown & Kilcrouney townlands
42	Larch, Scots Pine & Sycamore groups of trees	Knockrobin, Wicklow town
43	Roadside Beech trees	Holy Faith Convent, Kilcoole
44	Sycamore and Beech trees	Manor Kilbride, Blessington
45	Scots Pine and Spruce trees	Morepark, Newtownmountkennedy
46	Trees	Donard Lower (Ref 7654/02)

17.6 TREES AND GROUPS OF TREES TO BE CONSIDERED FOR PRESERVATION

MAP 17.06

ID	Description	Location
1	Trees, mainly beech	In the vicinity of the driveway to Powerscourt House and westward to Powerscourt Demesne townland boundary.
2	Trees on both sides of the R117	Cookstown, Monastery and Fassaroe townlands between Enniskerry Village and the N11 junction
3	Trees at Monastery townland	In the vicinity on Glenbrook, Enniskerry
4	Trees in Tynte Park	Loughmore Upper, Dunlavin
5	Trees at Rannock House	Monastery, Enniskerry
6	Copse of mixed trees	Hollybrook townland, west of N11 at Glencormick
7	Quill Wood	Kilmacanogue South
8	8 roadside trees mainly beech	On the southern side of the minor road running west of Killegar townland, in the vicinity of Killegar House
9	Woodlands at the Devils Glen, Ashford	Ballymaghroe, Birchwood and Ballydoreen townlands.
10	Trees on the eastern side of the N11 at Inchanappa House	Inchanappa South, Ashford
11	Ballyteige Wood	Rathdrum
12	Native Oakwood at Ballincor Woods	Ballincor, Rathdrum.
13	Deciduous woodlands in the Vale of Clara	In the townlands of Ballygannon, Rathdrum, Copse, Stump of the Castle, Cronybyrne, Clarabeg south, Ballyhad upper and lower, Knockrath little and big.
14	Woodlands, mainly oak	Derrybawn townland and Glendalough
15	Trees west of Avonmore river	Drummin, Annamoe
16	Deciduous woodlands	In the townlands of the Vale of Avoca – Woodenbridge area, Ballyraine middle, Glenart, Kilcarra east, Kilcarra west, Garnagowlan, Castlemacadam, Ballanagh, Ballyarthur, Shelton Abbey, Cherrymount, Ballygahan Lower, Tigroney West and Castlehoward.
17	Trees and woodlands at Kippure House and the Coronation Plantation	Liffey Valley, Manor Kilbride.
18	Trees on the banks of the Shankill River	Cloghleagh, Manor Kilbride.
19	Native oakwood	Glencree Valley
20	Native oakwood	Glen of the Downs
21	Native oakwood	Vale of Clara, Glendalough
22	Oaklands in the town of Boystown or Baltyboys Upper	Valleymount.
23	Trees in the townlands of Giltspur, Kilruddery demesne west and Ballynamuddagh	Southern boundary of the built up area of Bray
24	Trees at Hollywood house	Glenealy
25	Broadleaf trees at Burgage Mor,	Blessington
26	Trees at Monalin House,	Newtownmountkennedy
27	Large Beech, Oak and Horse Chestnut trees near St. Francis N.S. and the new rectory	Newcastle
28	Trees in the grounds of Tinnapark House	Kilpedder
29	Trees in the grounds of Luggala,	Sraghmore, Roundwood
30	Trees in the grounds of Russborough House	Blessington
31	Trees in the grounds of Charleville house	Enniskerry
32	Trees in the grounds of Glendalough Estate	Annamoe

33	Trees in the grounds of Humewood,	Kiltegan
34	Trees in the grounds of Mountkennedy house	Newtownmountkennedy
35	Trees in the grounds of Bellevue Demesne	Delgany
36	Trees in the grounds of Avondale House	Rathdrum
37	Trees at the old Jameson Estate	Avoca Handweavers, Kilmacanogue
38	Riverside trees associated with proposed preserved view	Immediately north of and including part of GAA lands, Ashford
39	Line of conifers on northern boundary of Church Grounds	Ashford
40	Roadside mature trees	Western side of Inchanappa lands referred to in Action Plan 1, excluding area zoned for town centre uses, Ashford
41	Line of trees at Inchanappa	Western side of Inchanappa lands south of Garda Station.
42	Mature trees lining avenue eastern side of access road to Inchanappa House	Ashford
43	Line of trees alongside stream	Lands at Inchanappa, close to Inchanappa House
44	Group of mature beech at Sparrow Road	Dunlavin
45	Group of trees at Kilcullen Street	Dunlavin
46	Knockrobin Oak and ornamental species forming the avenue of Knockrobin House.	Knockrobin, Wicklow Town
47	A copse of European Larch, Scots Pine and Sycamore, on Knockrobin Hill.	Knockrobin, Wicklow Town
48	Deciduous woodland overlooking the Wicklow to Rathnew Road.	Burkeen
49	A deciduous woodland forming the valley of the Marlton Stream	Ballynerrin
50	Southern boundary of Clermont House, with exception of any felling required for road access as indicated.	Rathnew
51	Line of trees at western boundary of Clermont House, with exception of any felling required for road access as indicated (junction with existing N11)	Rathnew
52	Line of trees stretching northwest to southeast, except where future road developments require removal.	Lands at Rosanna Lower, Ashford
53	Line of trees stretching northwest to southeast, except where future road developments require removal.	North of Vartry River near Mill Road
54	Mature deciduous trees to rear and side of convent ground	Kilcoole
55	Mature deciduous trees to the front of the Catholic Church	Kilcoole
56	Trees on the grounds of Church of Ireland	Enniskerry
57	Trees on the ground of Kilgarran House	Enniskerry
58	Trees on the grounds of Monastery House	Enniskerry
59	Trees along Forge Road and Church Road	Enniskerry

60	Trees along Killegar Lane approaching Killegar Church	Killegar, Enniskerry
61	Trees south of Knocksink Wood on zoned lands	Enniskerry
62	Trees to the east of Monastery Road to the north of residential lands	Enniskerry
63	Trees in the grounds of Summerhill House Hotel	Enniskerry
64	Mature trees at Ballyronan	Newtownmountkennedy
65	Mature trees in the grounds of Kennedy Demesne	Newtownmountkennedy
66	Scots pine and spruce, to rear of St. Matthew's Church	Newtownmountkennedy
67	Mature deciduous trees Valle Pacis	Main Street, Newtownmountkennedy
68	Mature deciduous trees stream corridor	West of Main Street, Newtownmountkennedy
69	Two oaks on old N11, Newtownmountkennedy	Newtownmountkennedy
70	Deciduous trees Springmount house	Newtownmountkennedy
71	Deciduous trees Warblebank house	Newtownmountkennedy
72	Deciduous trees in hospital grounds	Newcastle hospital
73	Street trees (mainly sycamore and horse chestnut)	Church Road, Greystones

SCHEDULE 17.7 AREAS & SITES OF GEOLOGICAL AND GEOMORPHOLOGICAL INTEREST - MAP 17.07

	Site Name	Location		Summary description
1	Baltinglass	287000	188500	Tourmaline.
2	Tober, Dunlavin	287300	200600	Spring in gravels.
3	Hollywood Glen	293000	202000	Meltwater, channels, flood tracks.
4	Toor Channel	295000	203000	Glacial spillway.
5	Rathdangan End Moraine	297000	186000	Moraine, fan, kettle holes.
6	Upper Lockstown Delta	298000	202000	Glacial meltwater delta, fans.
7	Ballyknockan Quarries	300852	206854	Granite quarries.
8	Ballingen	306500	175700	Mineralogy in microgranite.
9	Ballingen	306500	175700	Tungsten and other minerals.
10	Van Diemen's Mine	307000	196000	Pyromorphite mineral.
11	Athdown Moraine	307000	214000	Moraine, gravels.
12	Lough Nahanagan	308000	199000	Corrie.
13	Wicklow Gap	308000	200300	Granite pillars.
14	Lough Ouler	309000	202000	Corrie.
15	Glendasan	309800	198200	Pyromorphite, wolfenite, other minerals.
16	Glendasan [Pb]	310187	198204	Lead-Zinc veins in Leinster Granite; mine workings.
17	Glenmacnass Waterfall	310500	202800	Leinster Granite contact with Ordovician sediments.
18	Glendalough Valley	311000	196000	Delta, hanging valley, U-shaped valley.
19	Glenmacnass	311000	202000	Granite, schists, moraines, U-shaped valley, upland morainic landscape.
20	Aughrim Quarry	312500	179500	Microgranites earlier than Leinster Granite.
21	Lough Dan	315000	204000	Ribbon lakes.
22	L. Tay/ Luggala	316000	207500	Coticule/garnetiferous quartzites with intricate folds.
23	Lough Tay	316000	207500	Ribbon lakes.
24	Luggala	316600	208300	Coticule (garnet quartzite).
25	The Mottee Stone	320650	183350	Large erratic boulder.
26	Slieveroe lane and rail cutting	321250	189200	Ordovician shelly fossils.
27	Kilmacoo	321278	183990	Pyrite Mine with metallic minerals.
28	Rocky valley	322850	214700	Cambrian microfossils.
29	Devils Glen	324000	199000	meltwater channel.
30	Callow Hill Upr.	325500	202600	Eskolalite - green mineral coating on quartz pebbles.
31	Glen of the Downs	326000	111000	Glacial overflow channels, glacial meltwaters.
32	Dunran	326000	202300	Meltwater channel.
33	Greystones	328000	214000	Glacial morainal bank, coarse grained diamict.
34	Bray Head	328000	217000	Cambrian trace fossils, Oldhamia.
35	Bray Head	328000	217000	Type locality of the Cambrian Bray Head Formation.
36	Lough Dan, north end	~314350	~204500	Leinster Granite contact with Ordovician sediments.
37	Glencullen River - Enniskerry	~320500	~219000	Gorge.
38	Manger - Saundersgrove	288500	193000	Palaeo-deltas.
39	Church Mountain	294800	201300	Chemical weathering, mass wasting.
40	Brittonstown	295000	208400	Glacial channel.

41	Lacken	301500	211000	Chemical weathering.
42	Table Mountain	302000	197300	Peat hags and erosion.
43	Derrywater & Derry River, Tinahely	306000	173000	Fluvial captures and diversions, palaeochannels.
44	Lugnaquilla	306000	192000	Glacial features, e.g. nunataks.
45	Ballydonnell	306000	210200	Gravel bars, glacial mountain erosional inheritance.
46	Glenmalure (north side)	306600	194450	Leinster granite contact.
47	Mullacleevaun	306800	207000	Peat hags and erosion.
48	Glenmalure	307000	193700	Scree, fan, mass wasting.
49	Wicklow Mountains	307000	207000	Valley glacier landscapes.
50	Lugduff	307200	195400	Pseudokarst pipes.
51	Glendalough	308957	196248	Lead-zinc mineralization in Leinster Granite
52	Glendalough	309250	196150	Leinster Granite contact with Ordovician sediments.
53	Glendasan	309900	198200	Boulder beds, bedrock channel.
54	Glenmalure	310000	191000	Morainic landscape.
55	Camaderry Appinite	310400	196900	Appinite (igneous intrusion).
56	Glendalough	311000	196000	Pollanass waterfall, glacial mountain erosional inheritance.
57	Glenmacnass Upper	311500	202800	Meanders, waterfall, boulder beds, bedrock channel.
58	Kippure	311500	215500	Peat hags and erosion.
59	Lough Bray, Upper and Lower	313600	216000	Corrie lakes.
60	Lough Bray, Upper and Lower	314000	216000	Corries.
61	Ballinvalley (Goldmine R.) [Au]	315000	174000	1790's gold workings.
62	Goldmines River	316000	175000	Straths, planation surface.
63	Cloghoge River and Lough Tay	316000	205300	Mass wasting, waterfall, boulder beds, delta.
64	Ballycoog [BIF]	317000	177000	Magnetite-siderite deposits in Avoca Volcanic Formation; old workings.
65	Ballybrew Quarry	319215	219205	Leinster granite quarry.
66	Ballybrew Quarry	319215	219205	Leinster granite quarry.
67	Powerscourt Waterfall	319750	212055	Steep 100m waterfall.
68	Powerscourt Deerpark Cave	320360	211465	Cave breccia of fluvial gravels.
69	Avoca Mine	320616	182986	Avoca Copper Mine.
70	Powerscourt	321000	216000	Morraines.
71	Enniskerry Delta	322000	218000	Delta.
72	The Sugarloaf	323800	213100	Physical weathering, scree.
73	Devils Glen	324000	199000	Waterfall, bedrock channel, gorge.
74	Great Sugarloaf	324000	213000	Scree slopes.
75	Snugborough	324400	178300	Fossil Pingos (glacial mound).
76	Ballard	326299	187484	Numerous Ballards In Wicklow.
77	Greystones	329850	212500	Appinite suites (igneous intrusions).
78	Wicklow - Greystones coast	332000 to 329000	194000 to 213000	Shingle coast with overwash features.
79	River Dargle, Enniskerry	~323700	~216350	Gorge.
80	Glen Ding	316000	215000	Glacial valley, overflow channel
81	The Scalp	321000	220000	Glacial outwash channel, block scree and spillway.
82	Crone forest outside Glenree	318300	214200	Pegmatite (igneous intrusions).
83	Haematite breccia locality	319825	209475	Haematite breccia.
84	Blessington	297500	215500	Glacial palaeo-deltas
85	Glencullen	320000	219200	Mass wasting (slumps)

86	Lockstown, Kings River	298050	203030	Meanders, oxbows, delta, palaeo-terraces, palaeo-deltas, glacial sedimentary inheritance, glacial mountain erosional inheritance.
87	River Slaney, Baltinglass	286750	189400	Gorge
88	Upper River Liffey	309450	213230	Gravel bars (Sean's Bar), Bm, EB, palaeo-terraces, glacial mountain erosional inheritance, glacial sedimentary inheritance.

SCHEDULE 17.8 VIEWS OF SPECIAL AMENITY VALUE OR SPECIAL INTEREST
MAP 17.10

	Origin of View	Description
1	R117 at The Scalp Enniskerry	View of the Sugarloaf Mountains and Enniskerry
2	L1011 at Curtlestown, Glencree Drive	View of Bray Head, Sugarloaf Mountain and Djouce Mountain
3	Cliff Road Windgates	View of Coast, Greystones and foreground of Bray Head
4	R761 Windgates Coast Road	View of Bray Head
5	R 761 north of Greystones	View northwards to Bray Head and view southwards of sea and built up area of Greystones.
6	L5529 Templecarrig, southern slopes of Little Sugarloaf, Kilmacanogue	View to the south and south-east of Kindlestown Hill and the coast
7	N11 Kilmacanogue	View of Little Sugarloaf
8	L1028 at Ballydonagh and Coolnaskeagh	View of Great Sugarloaf and Little Sugarloaf
9	L1031 Red Lane, Calary	View down valley towards sea
10	L1036 at Sroughmore, Roundwood	View of White Hill and Djouce Mountain
11	L5054 at Knockraheen, Vartry Drive	View of Vartry Reservoir in the vicinity of causeway
12	R755 at Sroughmore, Roundwood, Vartry Drive	View of Vartry Reservoir
13	R755 at Mullinaveig, Roundwood	View of Vartry Reservoir
14	R765 Knockraheen, Vartry Drive	View across Vartry Reservoir
15	L5061 Vartry Drive	View of Vartry reservoir to the west
16	R764 Vartry Drive, Roundwood	View of Vartry reservoir to the north east
17	R755 south of Roundwood	View of Derralossary Church
18	L6169 at Raheenavine & Crone More, Avoca	View from the L-6169 towards the R753 and the Avonbeg River valley and across to Cushbawn Mountain
19	L6154 to east of Mottee stone, Connary, Avoca	View of coast to northeast and south
20	L2167 Kilmacoo, Parnell Drive	View of valley and towards Kilmacree Pass
21	L 5677 Tonlegee, Brittas Bay	View towards Brittas Bay, sea, sand dunes and beach
22	R748 Holts Way at Killaveny	View from crossroads to northwest, west and southwest of Tinahely and surrounding area
23	N11 south of Scratenagh Cross	View of sea and coast
24	R747 at Aughrim Bridge, Holt's Way	View of Aughrim and hill to north
25	R747 east of Tinahely, Holt's Way	View of Tinahely and hill to west
26	R748 Kilcavan Gap,	View to north east and north west
27	R747 south of Baltinglass Slaney Drive	View of Rathnagree and Rathcoran hillforts
28	N81 Hollywood	View of Slievecorragh Hill
29	R756 at Hollywood. Wicklow Gap	View to west over N81 and towards

	Drive	Kildare
30	R758 Annacarney, Valleymount	View north-eastwards of Poulaphuca Reservoir
31	L8361, Willmount, Valleymount	View of north-westwards of Poulaphuca Reservoir
32	N81 Poulaphuca, south of Blessington	View of River Liffey, Ballymore Eustace reservoir
33	N 81, Burgage More, south of Blessington	View of Poulaphuca Reservoir and inlet
34	L4371 Threecastles, Blessington Liffey Valley	View Threecastles (National Monument 532) and broken of Poulaphuca Reservoir through trees.
35	Glen of the Downs	View of north, west and south from the Octagon on the east side of the N11 in the Glen of the Downs Nature Reserve over woodlands, Downs Hill, Downs, Calary and Red Lane. Views to east, south and west over Drummin Hill and Stylebawn from the upper paths within the Nature reserve.
36	L5007 Ballyman Road, Enniskerry	View of The Scalp and the Scalp Valley from Ballyman

SCHEDULE 17.9 PROSPECTS OF SPECIAL AMENITY VALUE OR SPECIAL INTEREST
MAP 17.11

	Origin	Feature
1	L1011, L1015 & L5014, Glencree	Prospect of mountain area around Glencree Drive, Prince William Seat, Glencree River and Sugarloaf Mountain
2	L1013 Glencree Drive South	Prospect of Tonduff mountain and Glencree river valley. View to east of Sugarloaf mountain
3	L1013 & L1017, Balinagee, Glencree Drive	Prospect of Glencree Valley and Sugarloaf
4	L1033, Rocky Valley Drive	Prospect downhill from the road to the west, north and northeast towards Powerscourt, Enniskerry and Bray
5	R755 Rocky Valley, Kilmacanogue	Prospects of both sides of Rocky Valley, Kilmacanogue
6	Bray–Greystones Cliff Walk	Prospect of sea, cliffs and across southern slopes of Bray Head to R761 from Cliff Walk
7	Railway from Greystones to Wicklow town	Prospect of coast along railway line
8	L1035 Long Hill, Kilmacanogue	Prospect towards Bray Head, Great Sugarloaf and coast
9	L1031 Red Lane and R755 at Calary	Prospect of Great Sugarloaf at Calary
10	R755 at Calary	Prospect of Ballyremon commons and Calary upper
11	N11 south of Kilmacanogue	Prospect to west of Great Sugarloaf, across Kilmacanogue Marsh and Quill Road
12	L5529 Little Sugarloaf Kilmacanogue (Bohilla Lane)	Prospect of Little Sugarloaf and the coast
13	N11 Glen of the Downs	Prospect of both sides of Glen of the Downs
14	N11 at Kilmullin	Prospect of Kilcoole and the coast
15	N11 Coyne's Cross to southern end of Cullenmore Interchange to east and southeast	Prospect of Wicklow Head and coastline
16	R764 and L5061 at Roundwood	Prospect of Vartry Reservoir
17	R115 Military Road Glencree to Laragh	Prospect of both sides of mountainous terrain
18	R759, Sally Gap Road	Prospect extending from Sroughmore to Balysmutton
19	R759 Manor Kilbride to Ballysmutton Liffey Valley Drive	Prospect of Liffey valley and mountains
20	R758, L8369, L4364 & L4365 Lake Drive from the N81 at Glashina to Oldcourt	Prospect of Poulaphuca Reservoir
21	N81 at Russborough	Prospect of Russborough House, Russeltown park and towards Poulaphuca Reservoir
22	L8347 Ballintober	Prospect eastwards of Lakes and Moanbane mountain
23	R756 Wicklow Gap road	Prospect of area around the Wicklow mountains extending from Laragh to

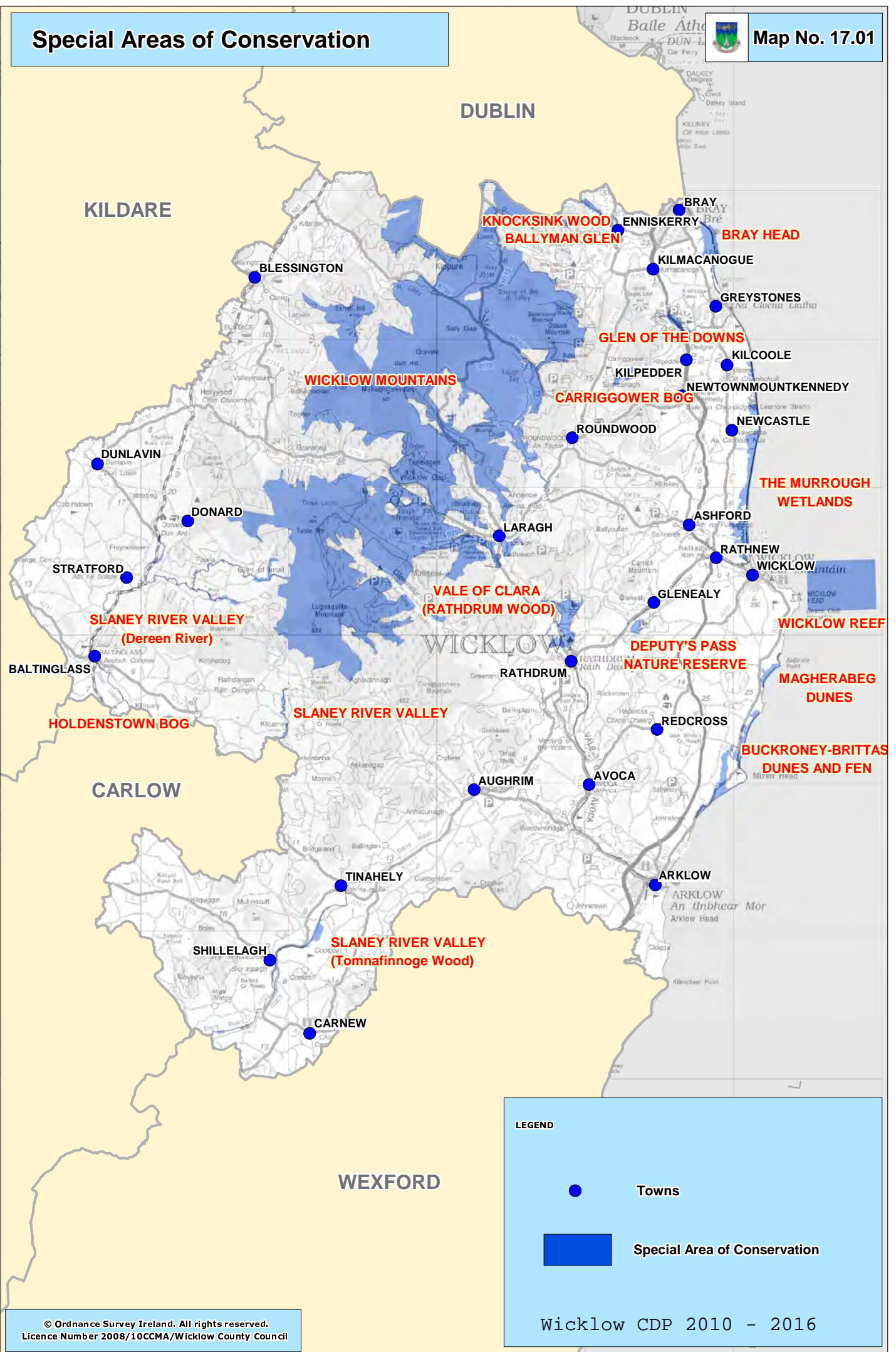
		Slievecorragh
24	R757 at Glendalough	Prospect of both sides of Glendalough Valley
25	L1059 from Oldbridge to Laragh	Mountainous and forested prospect in a westerly and southerly direction
26	Lough Dan Road (L10591)	Prospect to Lough Dan Valley and Carrigeenshinnagh Mountain
27	R755 south of Annamoe	Prospect of Avonmore River Valley, Castlekevin and Trooperstown Hill
28	R755 Annamoe	Prospect of Annamoe Hill and Avonmore River Valley
29	N11 south of Rathnew	Prospect of Murrough and sea
30	N11 Ballinabarney	Prospect of Hawkstown Hill
31	R750 Wicklow to Arklow	Prospect towards sea from coast road
32	N11 at The Tap	Prospect of Kilbride and Castletimon Hills
33	N11 south of Scratenagh Crossroads	Prospect of Ballymoyle Hill
34	L6171 and L2172 at Barraniskey, Arklow	Prospect of Webbs River Valley and Arklow
35	L2172 and L6167 at Crone Upper, Redcross	Prospect to northeast and east towards Wicklow Head and coast
36	R754 west of Redcross, Parnell Drive	Prospect towards Kilmacrea and across river valley
37	L5155 Connary, Parnell Drive	Prospect towards Avonmore river valley
38	R752 from White Bridge to The Meetings	Prospect eastwards and westwards towards Avoca Valley and deciduous forests
39	L2149 to the north of Avondale Forest Park, Parnell Drive	Prospect towards Forest Park, Avonmore River Valley and Parnell quarry at Balleese
40	L5118 Deputy's Pass, Glenealy	Prospect of both sides of Deputy's Pass including woodland.
41	R755 Vale of Clara Laragh to Rathdrum	Wooded valley prospect of Clara Vale on both sides of Valley
42	L6086 northern side of Clara Vale	Prospect to northeast of Trooperstown Hill and Clara Vale to south west
43	L2083, L2128, L3260, Laragh (Bookey Bridge) to Mullin Crossroads, via Aghavannagh	Prospect from both sides of Military Road
44	L6082 from Glenmalure to Baravore	Prospect of both sides of Avonbeg River Valley
45	L8294 and L8295 at Brusselstown	Prospect of Spinans Hill and Brusselstown Ringfort
46	L8297 at Spinans	Prospect to the east of Spinans Hill towards the castle on summit of Ballyhook Hill
47	N81 north of Baltinglass, Slaney Drive	Prospect of Slaney river valley, Baltinglass Abbey Rathnagree and Rathcoran hillforts
48	N81 at Merginstown Glen	Prospect of Carrigower river valley
49	L8341 and L8333 at Hollywood Glen	Prospect of both sides of Hollywood Glen
50	L8292 at Tuckmill Hill and Coolinarrig	Prospect of Rathnagree and Rathcoran hillforts and towards Spinans Hill and Brusselstown ring

51	R749 from Tinahely to Shillelagh	Prospect to south and east along R749 towards the Derry valley and Tomnafinnoge Wood
52	R748 Holts way at Coolroe	Prospect towards Annagh Hill and Croghan Mountain
53	L5108-63 Castletimon, Brittas	Views towards beach, sand dunes
54	R747 Holts Way at Coolalug, Mucklagh, Tomnaskela and Kilpipe	Prospect across Derry Water River and towards south Wicklow mountains
55	L2196 Ballycoogue to Mooreshill	Prospect of Goldmine River valley and Woodenbridge area
56	L6197 Ballycoog to Coolahullin	Prospect of Aughrim River Valley
57	L2197 at Coolgarrow	Prospect of Goldmine River valley
58	R747 from Woodenbridge to Coates Bridge, Aughrim	Prospect extending from Woodenbridge with tree lined valley and good river focus
59	L4262 Ballinabarney Gap to Mullins Cross	Prospect of Lugnaquilla Mountain and Dereen River Valley
60	L4262 at Derrynamuck, Military Road	Prospect of Keaden Mountain and vicinity of Dwyer McAllister cottage
61	R752 from Avoca to Woodenbridge	Prospect southwards and eastwards towards Avoca Valley and deciduous forests
62	R747 Vale of Avoca east of Woodenbridge	Prospect of both sets of Vale of Avoca including Avoca River Valley
63	L2180 (Beech Road) Sheepwalk to Raheen	Prospect of Arklow, Arklow Rock and coast
64	R7611-L1028 Kilruddery to Templecarrig	View of Little Sugar Loaf
65	Holy Year Cross, Tigroney	Prospect of Avoca River Valley
66	R761 East of Kilruddery Estate	Prospect of Bray Head from R761

Special Areas of Conservation



Map No. 17.01

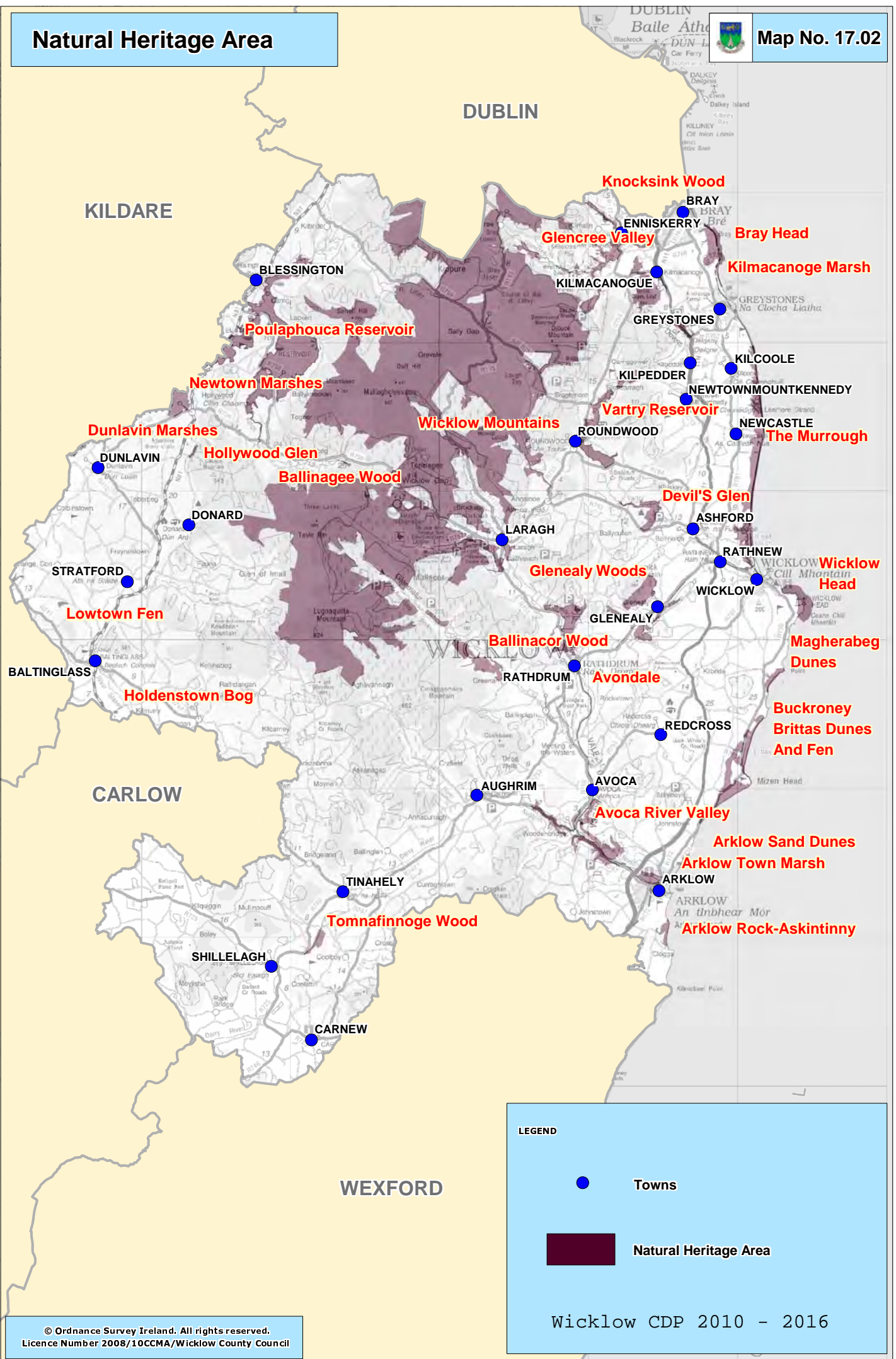


LEGEND

- Towns
- Special Area of Conservation

Wicklow CDP 2010 - 2016

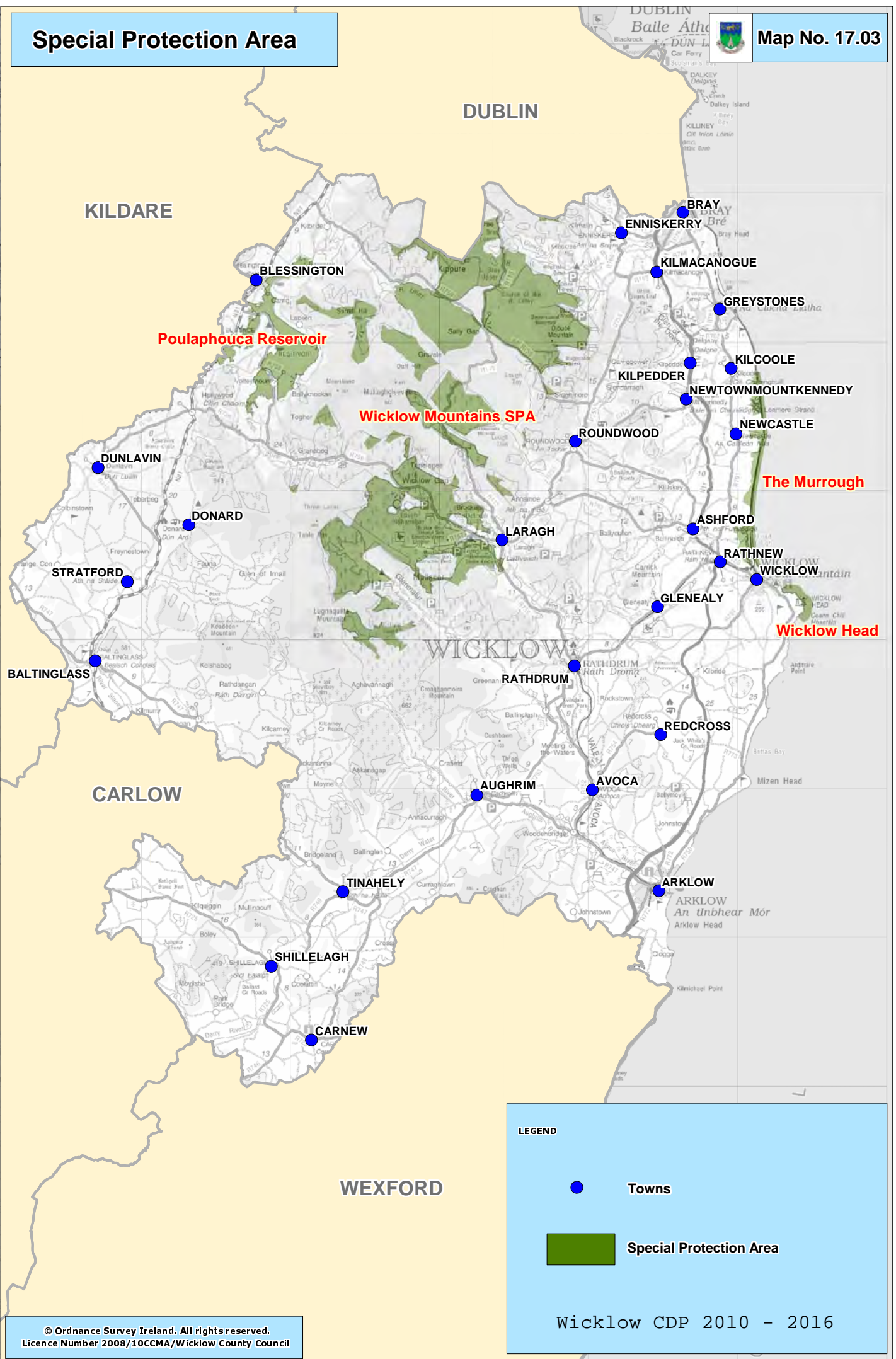
© Ordnance Survey Ireland. All rights reserved.
Licence Number 2008/10CCMA/Wicklow County Council



LEGEND

- Towns
- Natural Heritage Area

Wicklow CDP 2010 - 2016



LEGEND

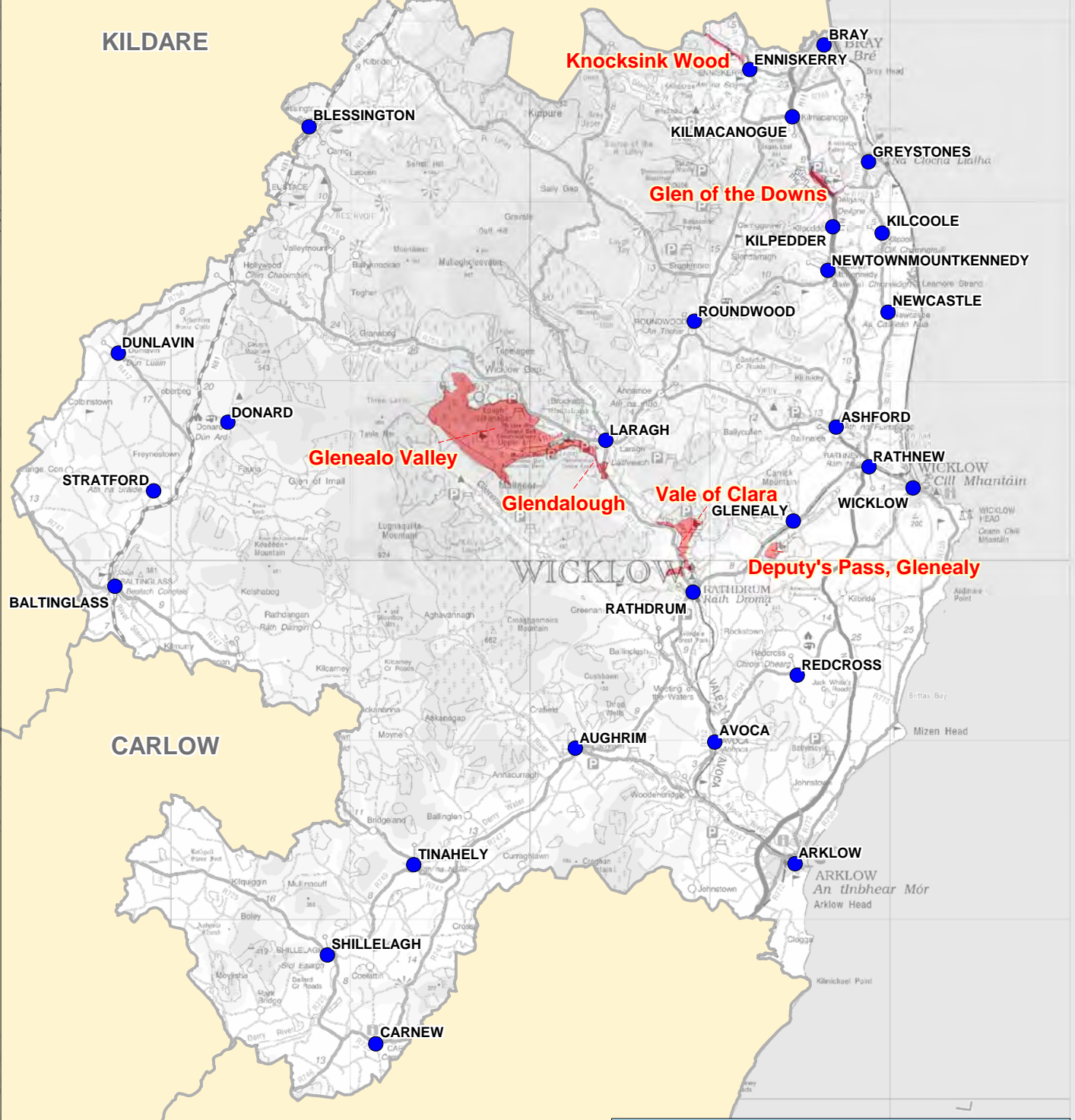
- Towns
- Special Protection Area

Wicklow CDP 2010 - 2016



DUBLIN

KILDARE



LEGEND



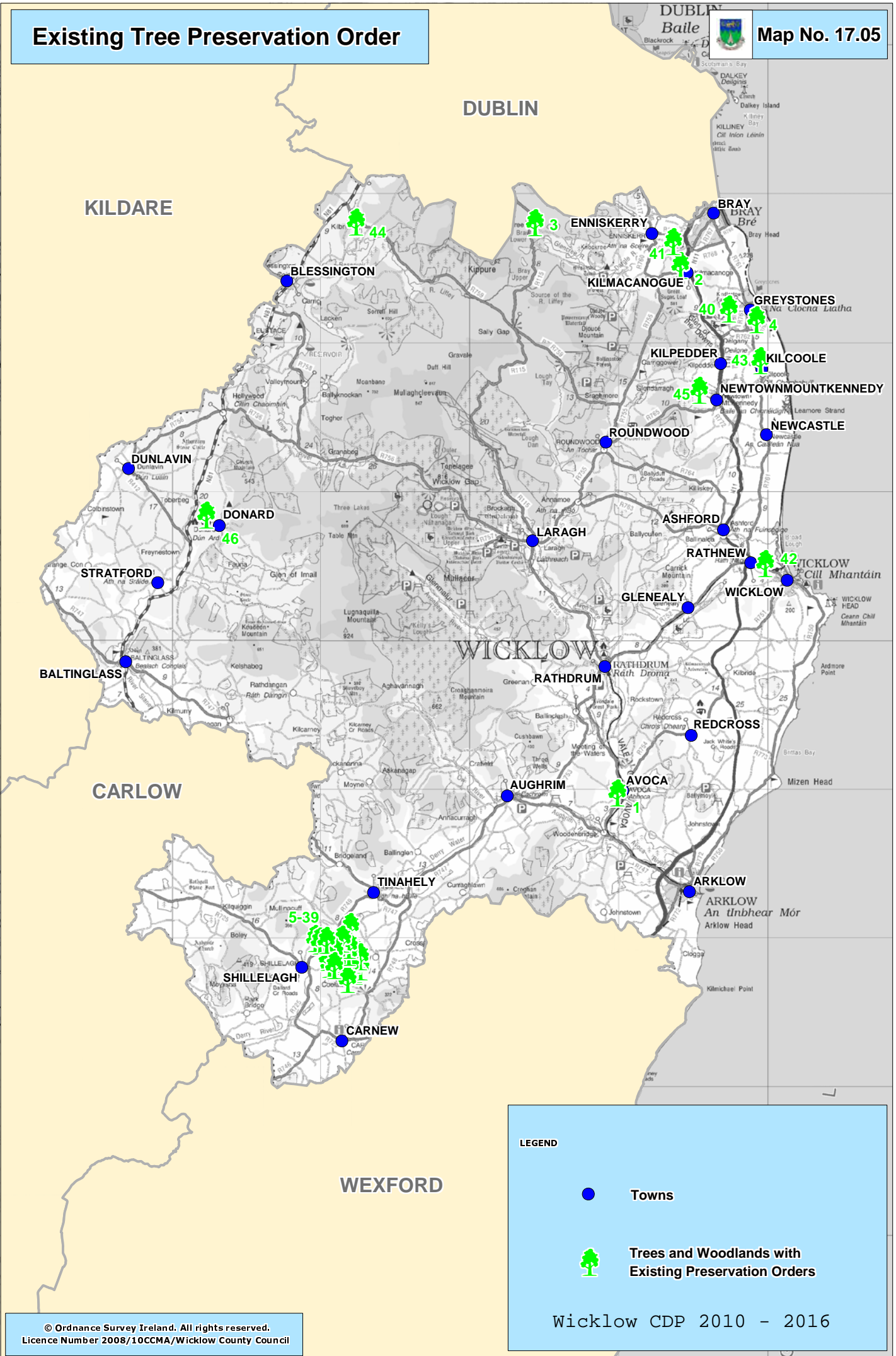
Towns



Nature Reserve

Existing Tree Preservation Order

Map No. 17.05



DUBLIN

KILDARE

BRAY

BLESSINGTON

ENNISKERRY

KILMACANOGUE

GREYSTONES

KILPEDDER

KILCOOLE

NEWTOWNMOUNTKENNEDY

ROUNDWOOD

NEWCASTLE

DUNLAVIN

DONARD

LARAGH

ASHFORD

STRATFORD

RATHNEW

WICKLOW

BALTINGLASS

GLENEALY

WICKLOW

RATHDRUM

REDCROSS

CARLOW

AUGHRIM

AVOCA

TINAHELY

ARKLOW

SHILLELAGH

CARNEW

WEXFORD

LEGEND

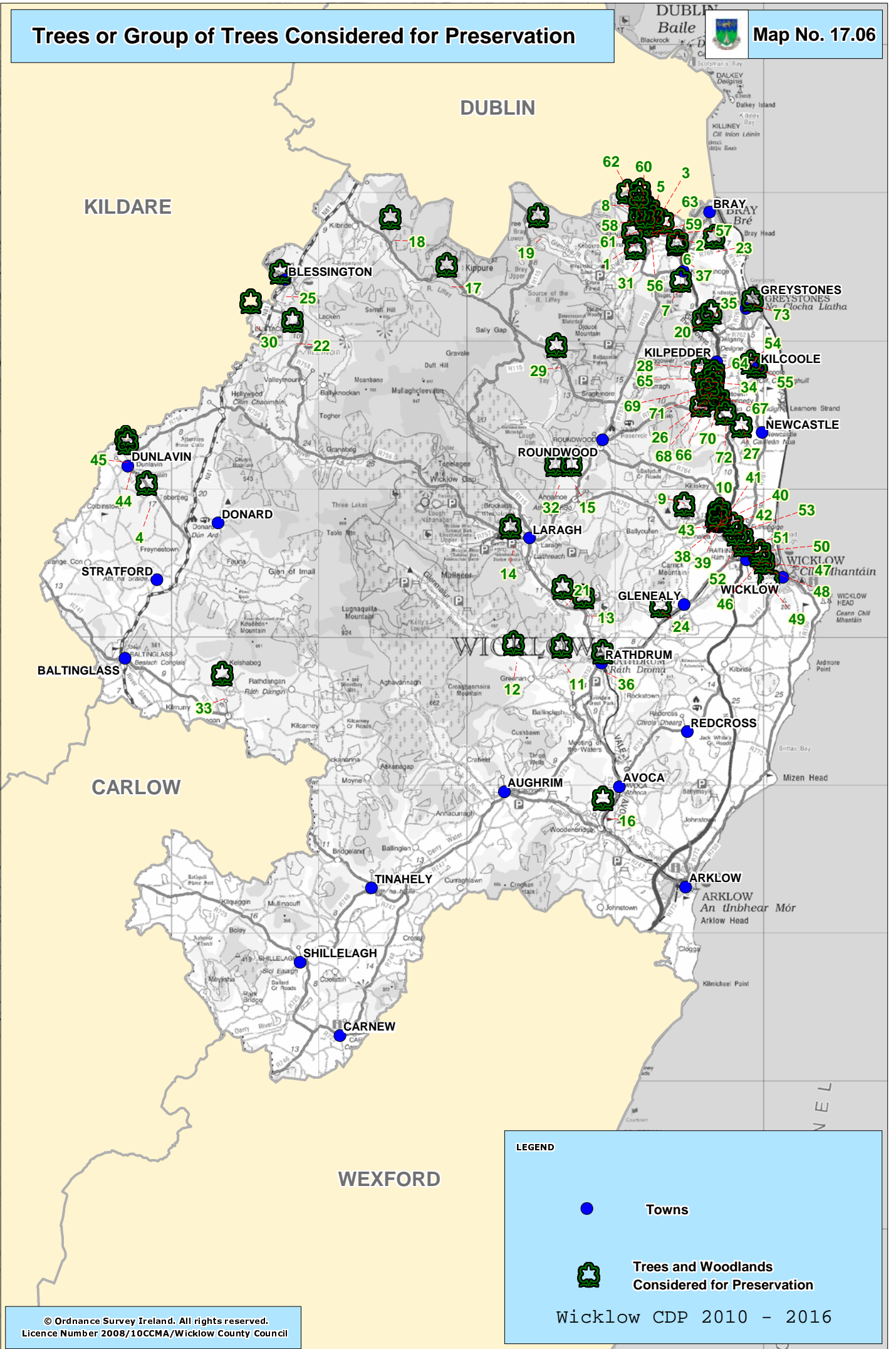
- Towns
- Trees and Woodlands with Existing Preservation Orders

Wicklow CDP 2010 - 2016

© Ordnance Survey Ireland. All rights reserved.
Licence Number 2008/10CCMA/Wicklow County Council

Trees or Group of Trees Considered for Preservation

Map No. 17.06



LEGEND

- Towns
- Trees and Woodlands Considered for Preservation

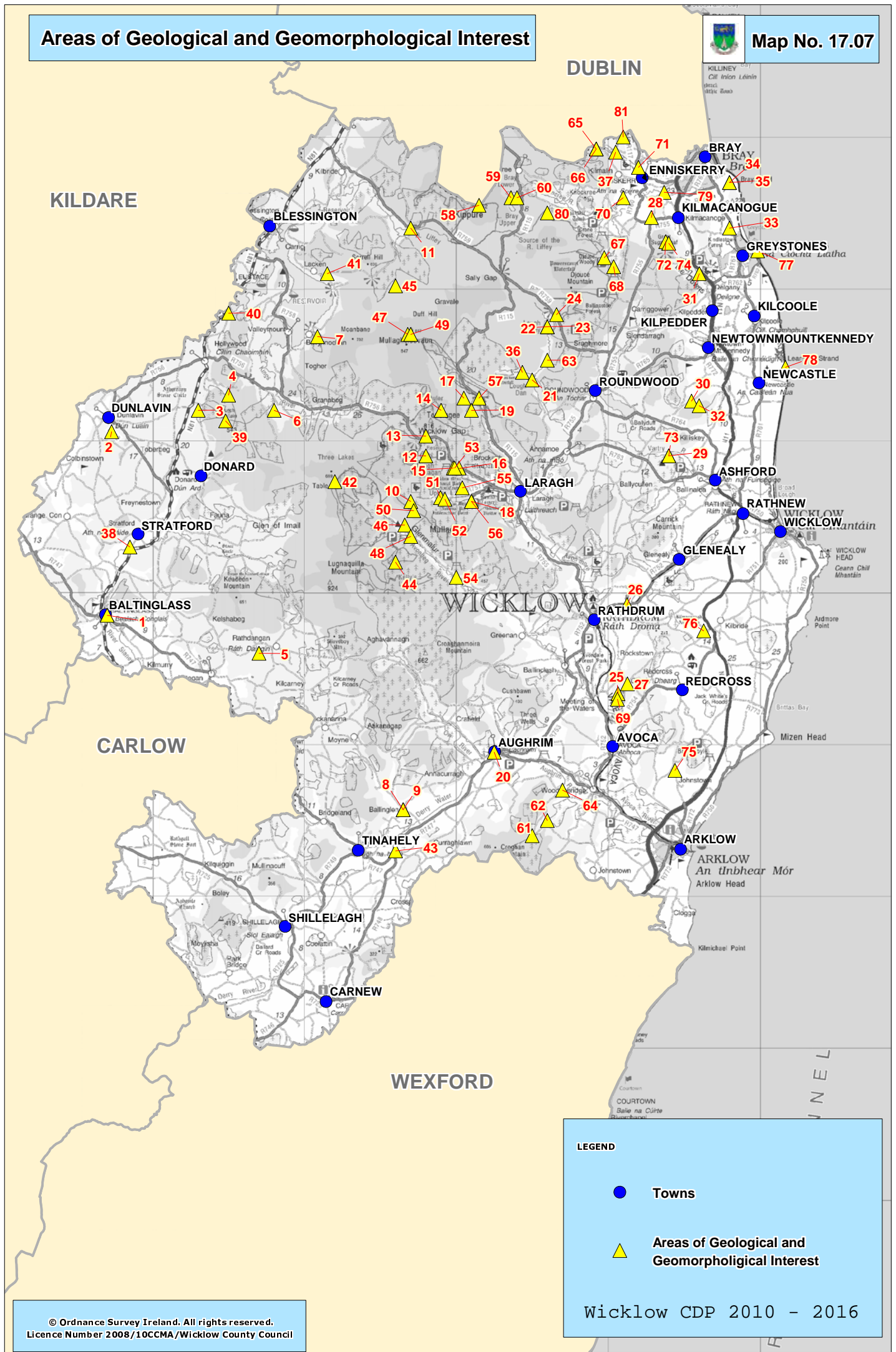
Wicklow CDP 2010 - 2016

© Ordnance Survey Ireland. All rights reserved.
Licence Number 2008/10CCMA/Wicklow County Council

Areas of Geological and Geomorphological Interest



Map No. 17.07

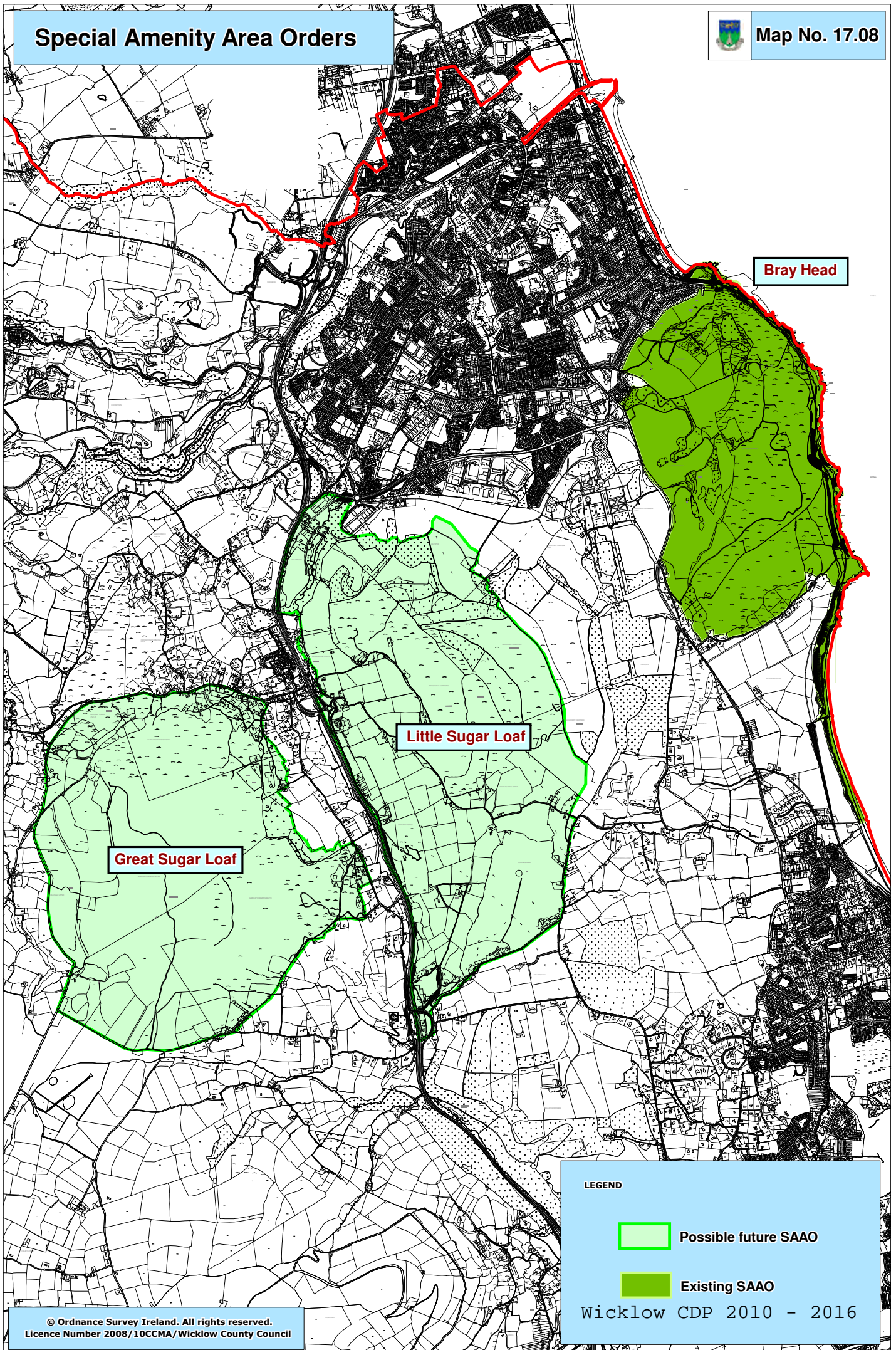


LEGEND

- Towns
- ▲ Areas of Geological and Geomorphological Interest

Wicklow CDP 2010 - 2016

© Ordnance Survey Ireland. All rights reserved.
Licence Number 2008/10CCMA/Wicklow County Council



Bray Head

Little Sugar Loaf

Great Sugar Loaf

LEGEND

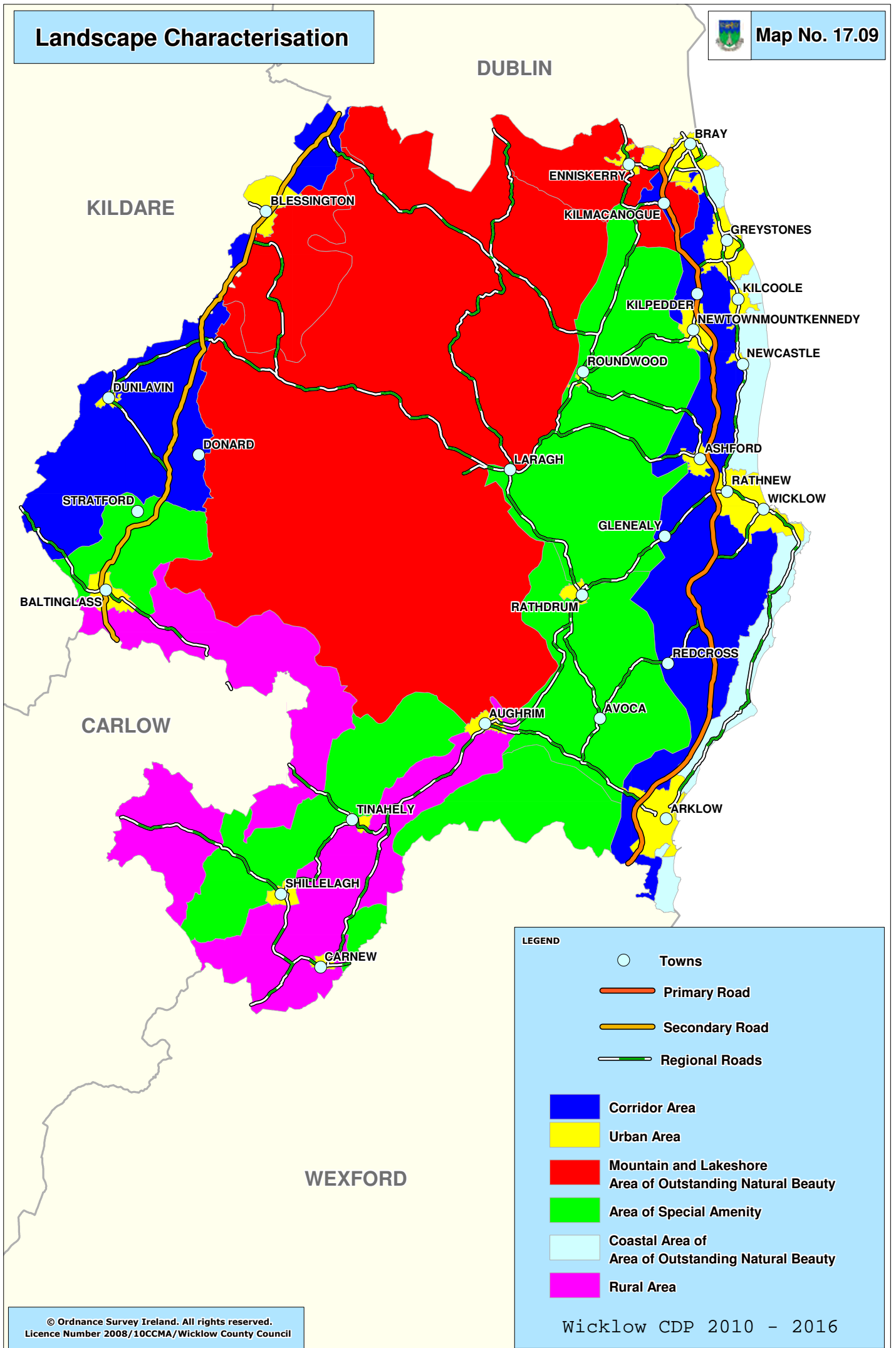


Possible future SAAO



Existing SAAO

Wicklow CDP 2010 - 2016



LEGEND

- Towns
- Primary Road
- Secondary Road
- Regional Roads
- Corridor Area
- Urban Area
- Mountain and Lakeshore Area of Outstanding Natural Beauty
- Area of Special Amenity
- Coastal Area of Outstanding Natural Beauty
- Rural Area

Wicklow CDP 2010 - 2016

Landscape Characterisation - North West



Map No. 17.09 A


LEGEND


 Primary Road


 Secondary Road

 Regional Roads

 Settlements

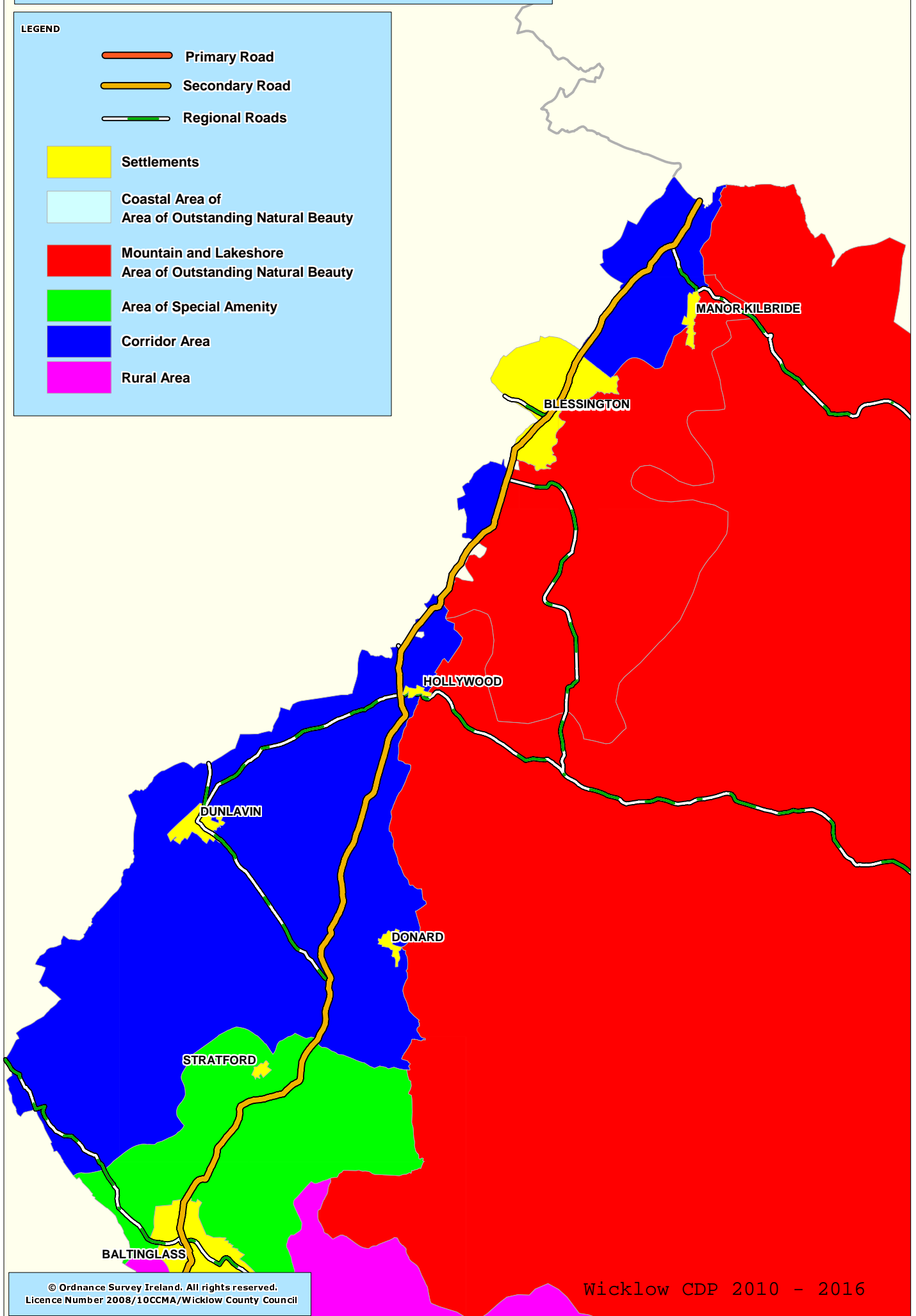
 Coastal Area of
Area of Outstanding Natural Beauty

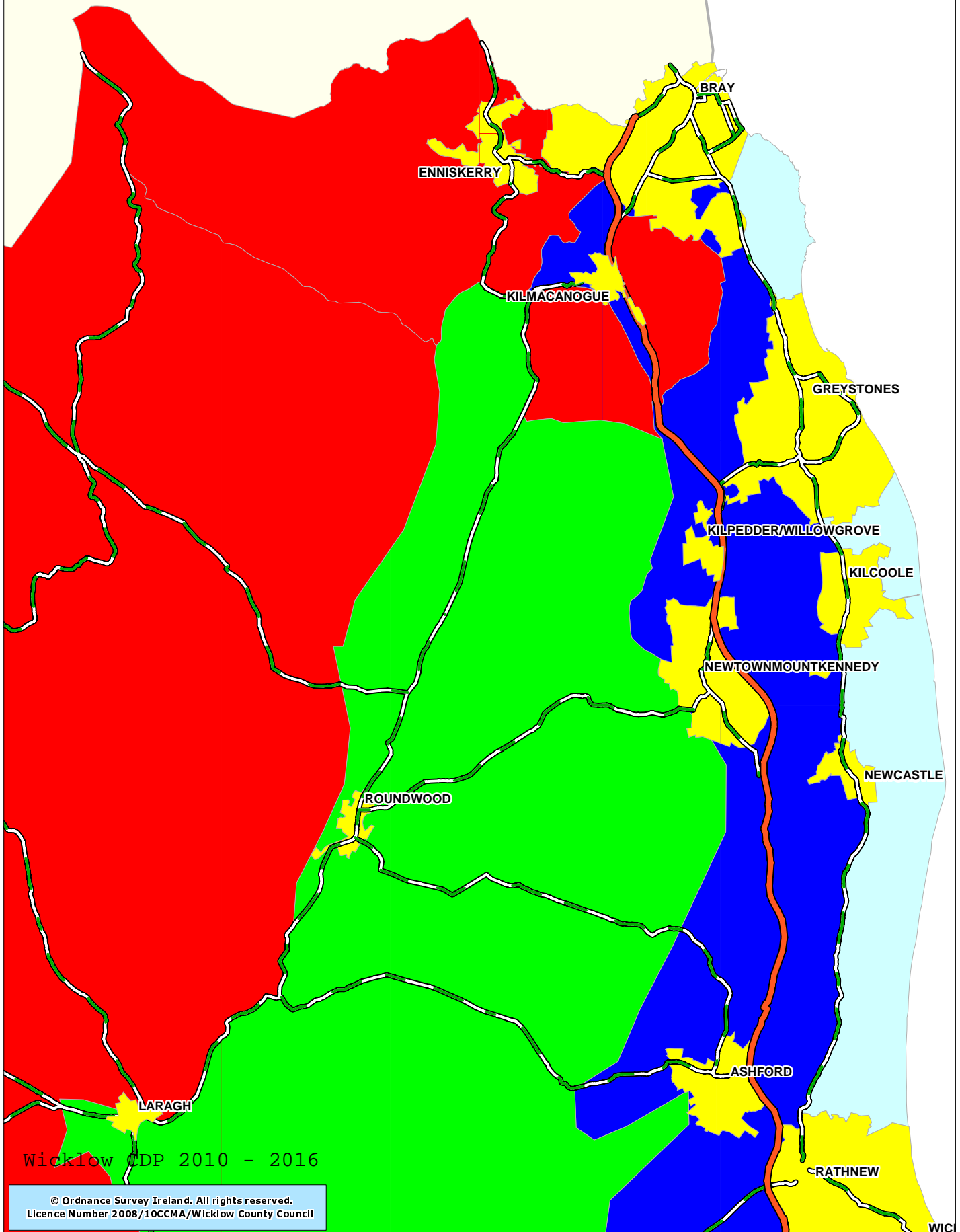
 Mountain and Lakeshore
Area of Outstanding Natural Beauty

 Area of Special Amenity

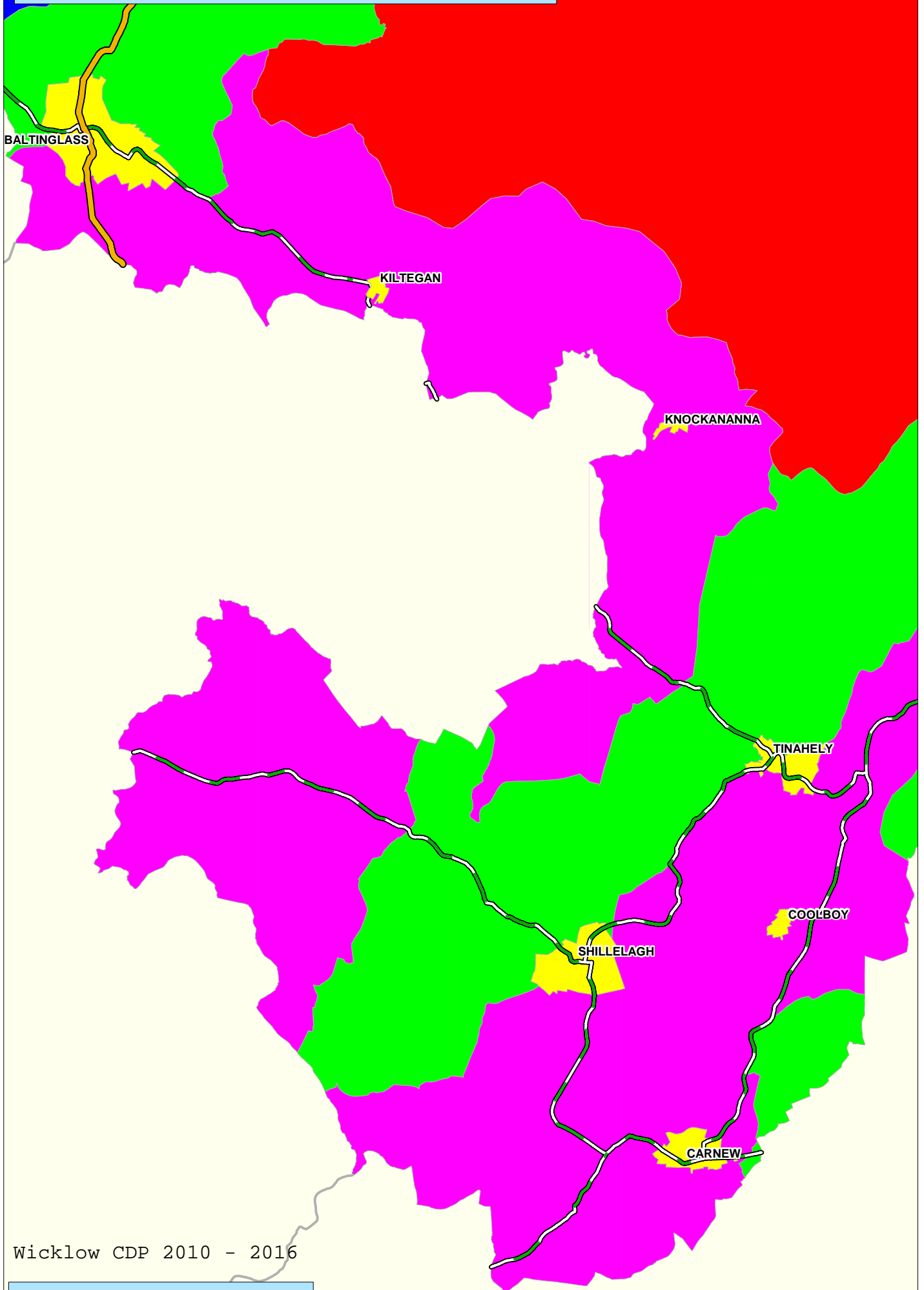
 Corridor Area

 Rural Area





Wicklow CDP 2010 - 2016

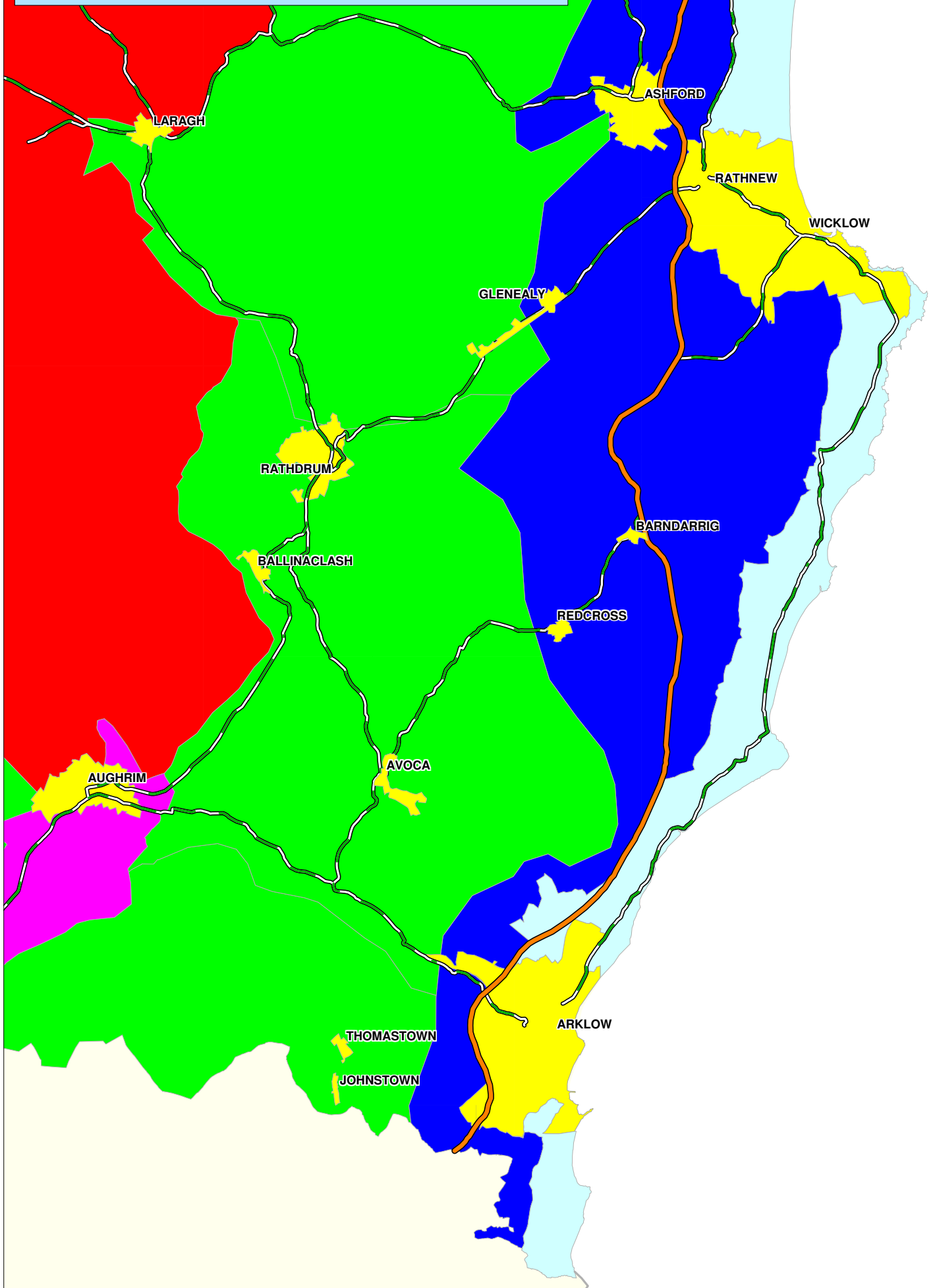


Wicklow CDP 2010 - 2016

Landscape Characterisation - South East



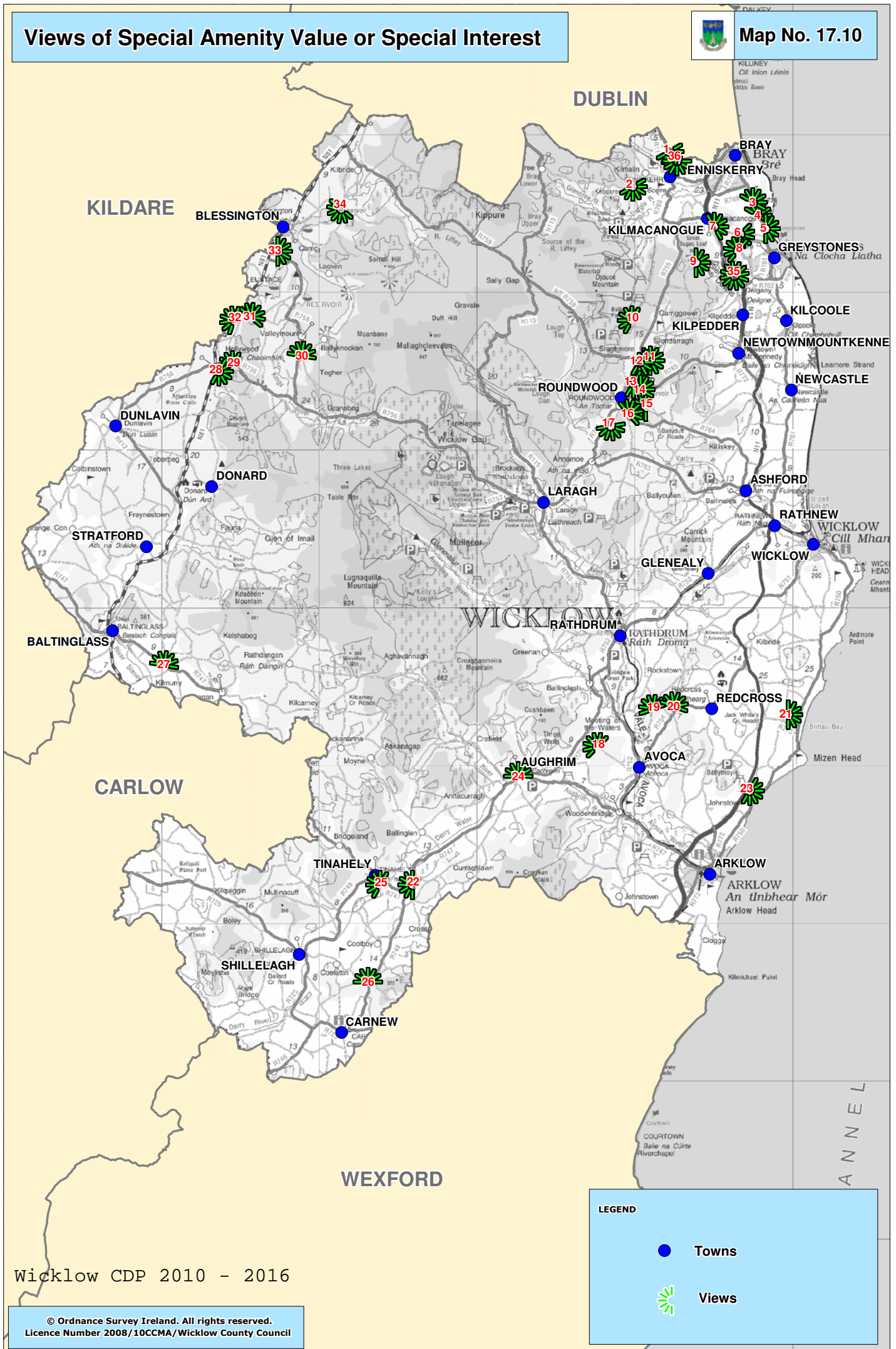
Map No. 17.09 D



Views of Special Amenity Value or Special Interest



Map No. 17.10



Wicklow CDP 2010 - 2016

© Ordnance Survey Ireland. All rights reserved.
Licence Number 2008/10CCMA/Wicklow County Council

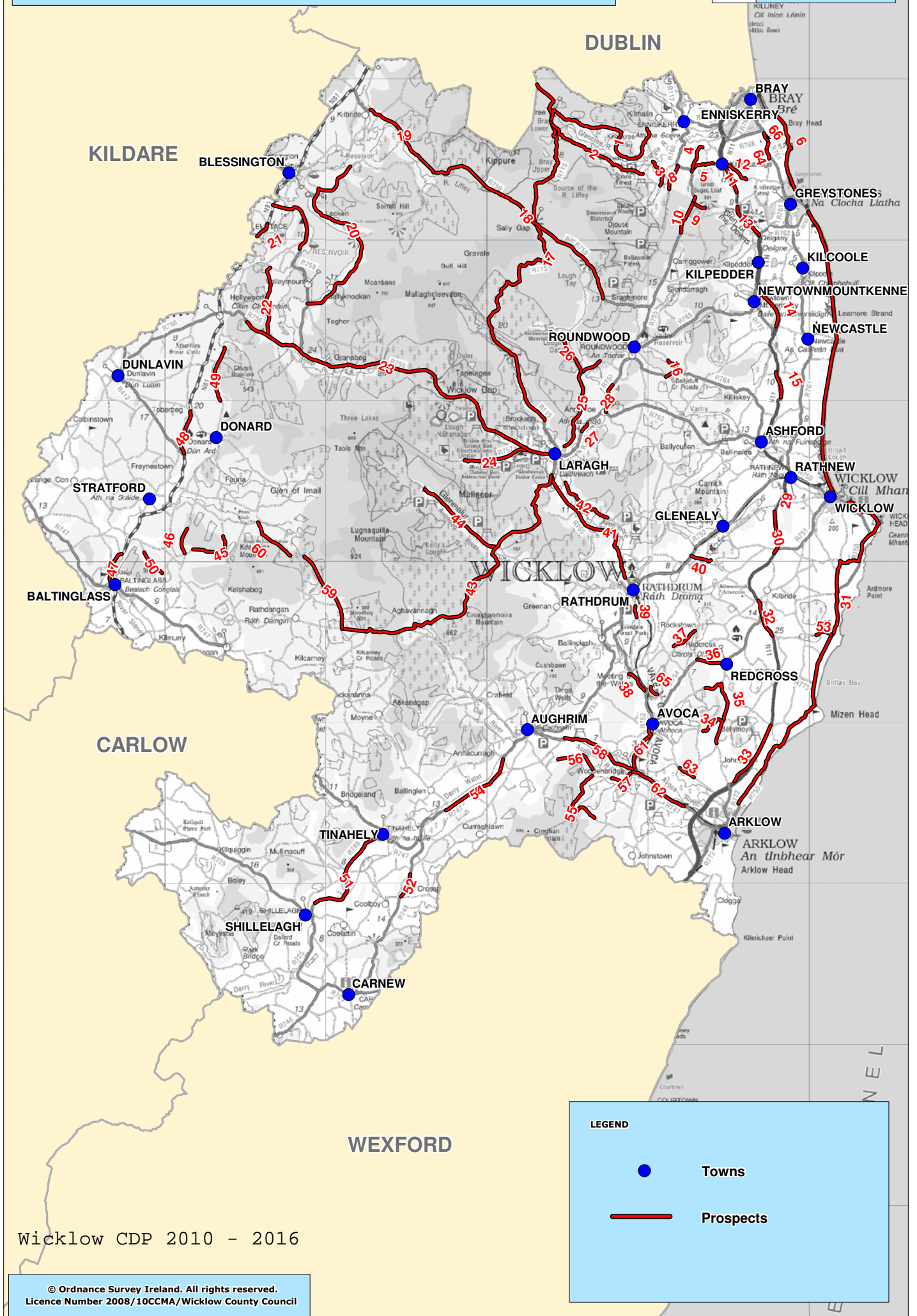
LEGEND

- Towns
- 🌳 Views

Prospects of Special Amenity Value or Special Interest

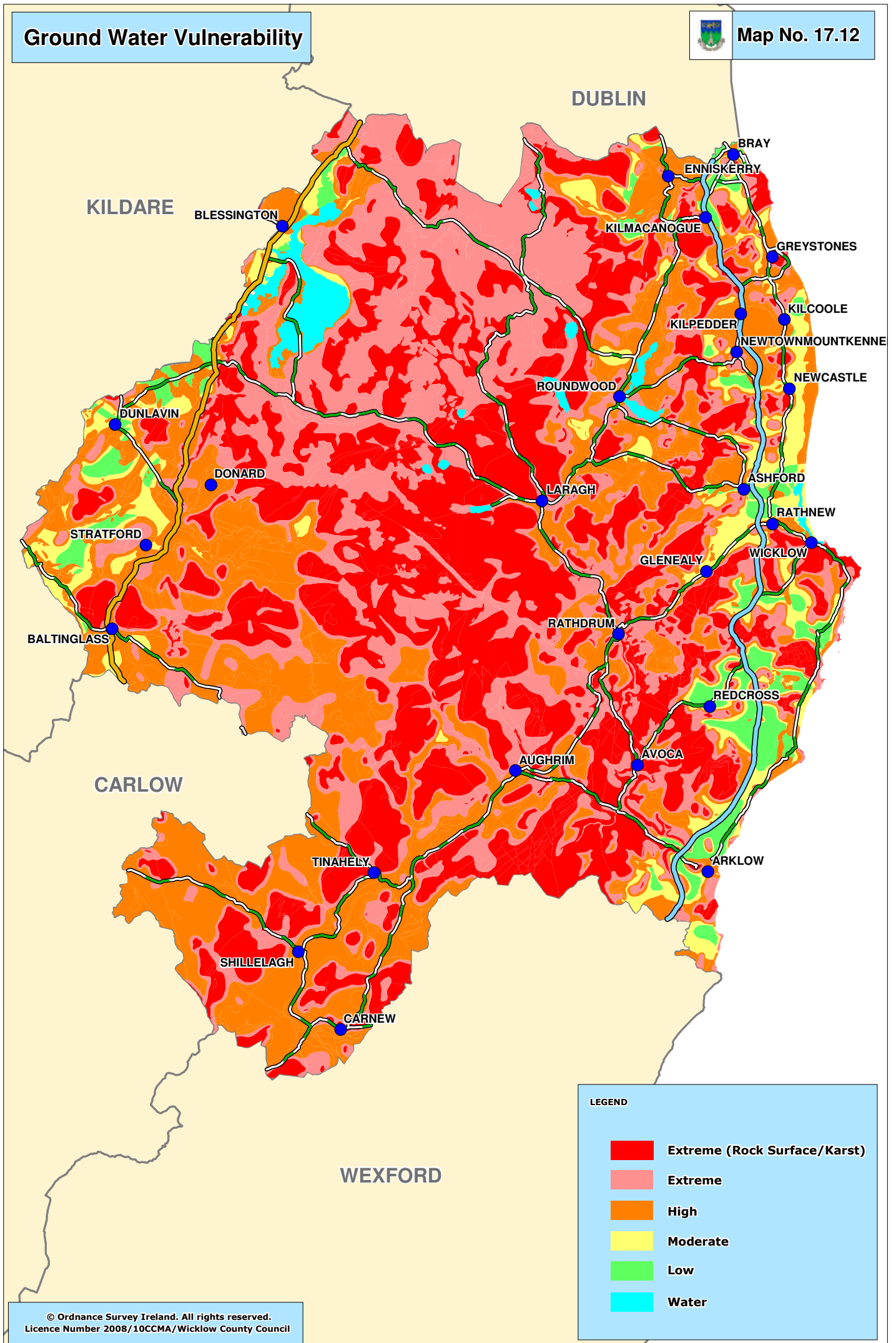


Map No. 17.11



Wicklow CDP 2010 - 2016

© Ordnance Survey Ireland. All rights reserved.
Licence Number 2008/10CCMA/Wicklow County Council



LEGEND

- Extreme (Rock Surface/Karst)
- Extreme
- High
- Moderate
- Low
- Water